

PAVING
STONES

TURFSTONE

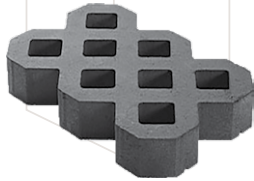
PAVING STONES



TURFSTONE

PAVING STONES

Turfstone is an intelligent solution for erosion control, ditch liners, parking pads and fire lanes. The open weave design allows for a breathable surface, which can be filled with grass plugs, topsoil or aggregate, making it an ideal solution for creating hidden accesses and right of ways.

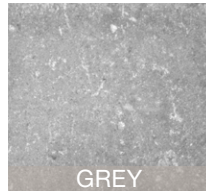


| Product Name | Dimensions | Paver Coverage | Layer Coverage | Pallet Coverage | Pallet Layers | Pallet Quantity | Pallet Weight |
|--------------|-------------------------------------|----------------|----------------|-----------------|---------------|-----------------|--------------------|
| Turfstone | 600 x 400 x 80mm 24 x 16 x 3.15" | .39/sqft | 12.9 sqft | 103 sqft | 8 | 40 | 930 kg 2050 lbs |

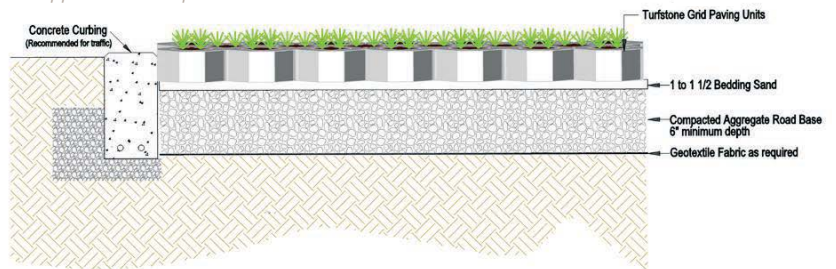
Applications



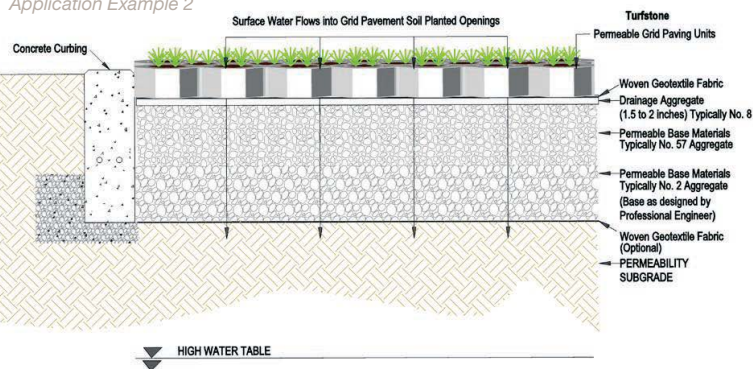
Colour Finishes



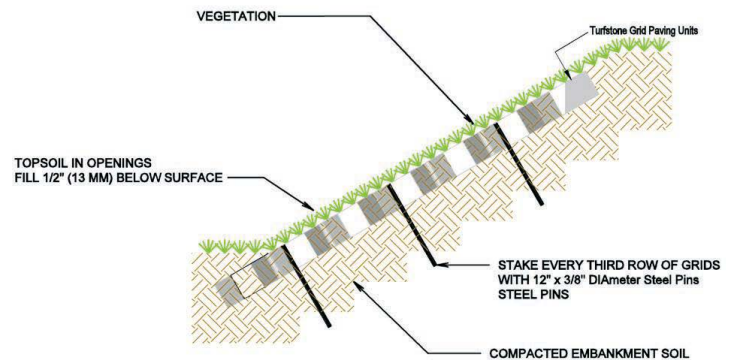
Application Example 1



Application Example 2



Application Example 3



Colour availability and colour finish may vary by region. Product is manufactured in metric measurements, imperial measurements are nominal.

